

**ESTADO DE SERGIPE**  
**MUNICÍPIO DE INDIAROBA**  
**HISTÓRICO DE PLUVIOSIDADE 2000 A 2021**

ANO	JAN	FEV	MAR	ABR	MAI	JUN	JUL	AGO	SET	OUT	NOV	DEZ	ACUM	MED	MIN	MAX
2000	123,0	35,0	86,0	64,0	269,0	214,0	142,0	87,0	70,5	49,0	...	...	1.139,5	114,0	35,0	269,0
2001	13,5	32,5	74,0	209,0	188,0	168,1	195,0	131,5	80,0	12,5	102,0	12,5	1.218,6	101,6	12,5	209,0
2002	...	...	...	...	...	...	...	...	...	...	...	...	-	-	-	-
2003	11,0	145,0	114,0	73,0	318,0	216,0	216,0	...	...	...	...	...	1.093,0	156,1	11,0	318,0
2004	390,0	118,0	...	110,0	148,0	75,0	158,0	209,0	47,0	...	...	...	1.255,0	156,9	47,0	390,0
2005	0,0	23,0	238,0	400,0	351,0	213,0	297,0	144,0	33,0	17,0	16,0	48,0	1.780,0	148,3	0,0	400,0
2006	0,0	26,0	6,0	268,0	245,0	459,0	272,0	119,0	107,0	112,0	51,0	7,0	1.672,0	139,3	0,0	459,0
2007	16,0	253,0	199,0	180,0	127,0	177,0	222,0	138,0	130,0	39,0	44,0	0,0	1.525,0	127,1	0,0	253,0
2008	41,0	99,0	204,0	310,0	295,0	196,0	246,0	140,0	124,0	64,0	0,0	34,0	1.753,0	146,1	0,0	310,0
2009	58,0	139,0	78,0	231,0	819,0	231,0	180,0	222,0	88,0	36,0	8,0	0,0	2.090,0	174,2	0,0	819,0
2010	156,9	75,0	102,0	310,0	244,0	337,0	318,0	136,0	36,0	83,0	3,0	23,0	1.823,9	152,0	3,0	337,0
2011	78,0	145,0	188,0	307,0	153,0	177,0	130,0	98,0	58,0	116,0	99,0	8,0	1.557,0	129,8	8,0	307,0
2012	19,0	97,0	58,0	16,0	92,0	146,0	168,0	131,0	35,0	45,0	17,0	0,0	824,0	68,7	0,0	168,0
2013	25,0	13,0	36,0	268,0	433,0	319,0	429,0	239,0	140,0	248,0	149,0	35,0	2.334,0	194,5	13,0	433,0
2014	20,0	105,0	156,0	208,0	171,0	162,0	316,0	201,0	145,0	65,0	133,0	20,0	1.702,0	141,8	20,0	316,0
2015	80,0	145,0	150,0	170,0	425,0	355,0	285,0	185,0	...	...	...	17,8	1.812,8	201,4	17,8	425,0
2016	141,5	32,2	67,1	52,2	245,3	270,7	95,3	57,8	100,2	35,0	4,8	23,4	1.125,5	93,8	4,8	270,7
2017	8,1	28,7	97,0	168,0	161,0	182,4	143,0	112,0	262,0	66,0	8,0	59,0	1.295,2	107,9	8,0	262,0
2018	77,0	47,7	132,0	181,0	179,0	340,0	102,0	35,0	20,0	76,0	25,0	8,0	1.222,7	101,9	8,0	340,0
2019	50,0	18,0	140,0	57,0	111,0	211,0	168,0	48,0	87,0	34,0	22,0	23,0	969,0	80,8	18,0	211,0
2020	60,0	108,0	124,0	130,0	304,0	289,0	336,0	70,0	52,0	42,0	60,0	83,0	1.658,0	138,2	42,0	336,0
<b>MÉDIA</b>	<b>68,4</b>	<b>84,3</b>	<b>118,4</b>	<b>185,6</b>	<b>263,9</b>	<b>236,9</b>	<b>220,9</b>	<b>131,8</b>	<b>89,7</b>	<b>67,0</b>	<b>46,4</b>	<b>23,6</b>	<b>1.536,9</b>	<b>128,1</b>	<b>23,6</b>	<b>263,9</b>

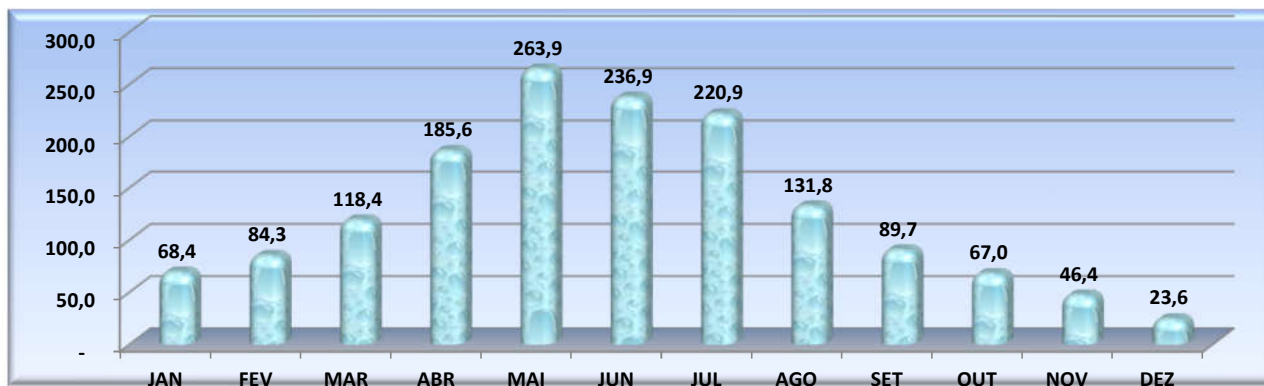
Fonte: Escritório local da Emdagro em Indiaroba

Elaboração e cálculos: EMDAGRO/ASPLAN

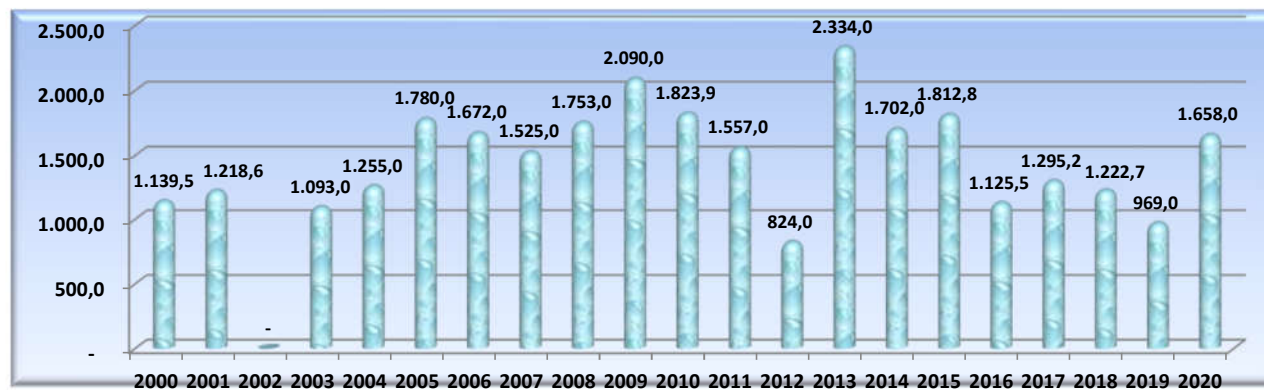
(...) Dados não disponíveis

Observação: Em 2021 o pluviômetro quebrou, não tendo sido possível repor outro aparelho.

Município de Indiaroba  
Gráfico 01 - Pluviosidade Média Mensal - 2000 a 2020



Município de Indiaroba  
Gráfico 02 - Pluviosidade Média Acumulada Anual - 2000 a 2020



Município de Indiaroba  
Gráfico 03 - Pluviosidade Acumulada Anual e Média do Período - 2000 a 2020

