

ESTADO DE SERGIPE
MUNICÍPIO DE ARAUÁ
HISTÓRICO DE PLUVIOSIDADE 2000 A 2021

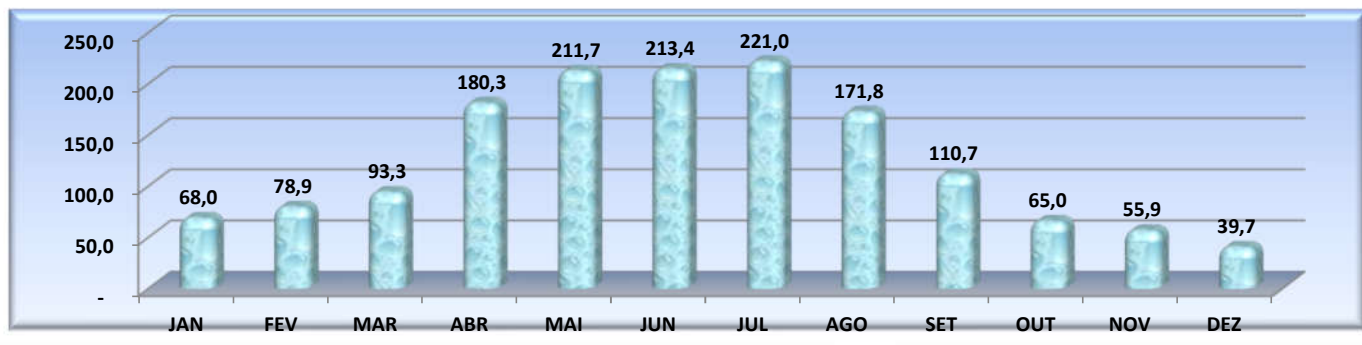
ANO	JAN	FEV	MAR	ABR	MAI	JUN	JUL	AGO	SET	OUT	NOV	DEZ	ACUM	MED	MIN	MAX
2000	195,0	178,0	67,2	260,5	86,0	192,0	142,0	134,5	307,5	7,5	178,0	86,0	1.834,2	152,9	7,5	307,5
2001	50,0	85,0	181,0	169,5	73,5	183,0	177,0	140,0	136,0	94,0	32,0	70,1	1.391,1	115,9	32,0	183,0
2002	293,0	93,0	57,5	43,0	156,0	237,0	99,0	128,2	67,5	13,0	45,2	55,0	1.287,4	107,3	13,0	293,0
2003	52,0	20,0	146,0	21,5	270,5	227,5	261,0	140,0	191,5	76,0	103,5	13,0	1.522,5	126,9	13,0	270,5
2004	70,0	102,0	55,0	128,5	151,5	143,0	120,5	815,0	93,5	0,0	205,0	0,0	966,0	805,0	0,0	151,5
2005	49,5	67,5	48,0	219,0	197,8	139,0	257,0	107,5	38,0	7,5	3,0	35,0	1.168,8	97,4	3,0	257,0
2006	40,0	9,0	77,0	244,5	114,5	303,5	373,5	119,0	122,5	140,0	37,0	0,0	1.580,5	131,7	0,00	373,5
2007	81,0	178,0	165,0	212,5	196,0	195,5	107,5	222,0	170,0	40,0	10,0	17,5	1.595,0	132,9	10,0	222,0
2008
2009	44,0	98,0	6,0	65,0	534,0	101,0	204,0	339,0	114,0	50,0	5,0	3,0	1.563,0	155,0	3,0	534,0
2010	33,0	168,5	176,8	283,0	165,0	418,0	522,0	171,8	151,0	89,0	3,0	12,0	2.193,1	182,8	3,0	522,0
2011	130,0	185,0	121,0	318,0	135,0	110,0	85,0	45,6	31,0	156,0	81,0	8,0	1.405,6	117,1	8,0	318,0
2012	12,0	100,0	21,0	15,0	163,0	156,0	222,0	180,0	65,0	182,0	0,0	10,0	1.026,0	86,5	0,0	222,0
2013	20,0	9,5	2,0	204,0	416,0	220,8	421,0	228,0	87,0	206,0	62,0	50,0	1.926,3	160,5	2,0	421,0
2014	16,0	74,0	201,0	297,0	187,0	344,0	300,0	116,0	54,0	69,0	186,0	16,0	1860,0	155,0	16,0	344,0
2015	20,0	79,0	31,0	160,0	326,0	227,0	116,0	180,0	50,0	31,0	9,0	21,0	1250,0	104,2	9,0	326,0
2016	175,7	50,0	22,0	34,0	182,0	304,0	139,0	73,0	89,0	46,0	0,0	50,0	1164,7	97,1	0,0	304,0
2017	3,0	37,0	128,0	305,0	228,0	222,0	266,0	120,0	352,0	39,0	1,0	107,0	1808,0	150,7	1,0	352,0
2018	44,0	43,0	100,0	222,0	154,0	178,0	105,0	89,0	17,0	18,0	48,0	58,0	1076,0	89,7	17,0	222,0
2019	41,0	41,0	130,0	136,0	194,0	315,0	248,0	77,0	79,0	22,0	31,0	20,0	1334,0	111,2	20,0	315,0
2020	17,0	39,0	152,0	217,0	360,0	184,0	208,0	107,0	57,0	48,0	41,0	40,0	1470,0	122,5	17,0	360,0
2021	42,0	-	72,0	231,0	156,0	82,0	250,0	75,0	53,0	32,0	94,0	162,0	1249,0	104,1	0,0	250,0
MÉDIA	68,0	78,9	93,3	180,3	211,7	213,4	221,0	171,8	110,7	65,0	55,9	39,7	1.460,5	157,4	8,6	311,8

Fonte: Escritório local da Emdagro em Arauá

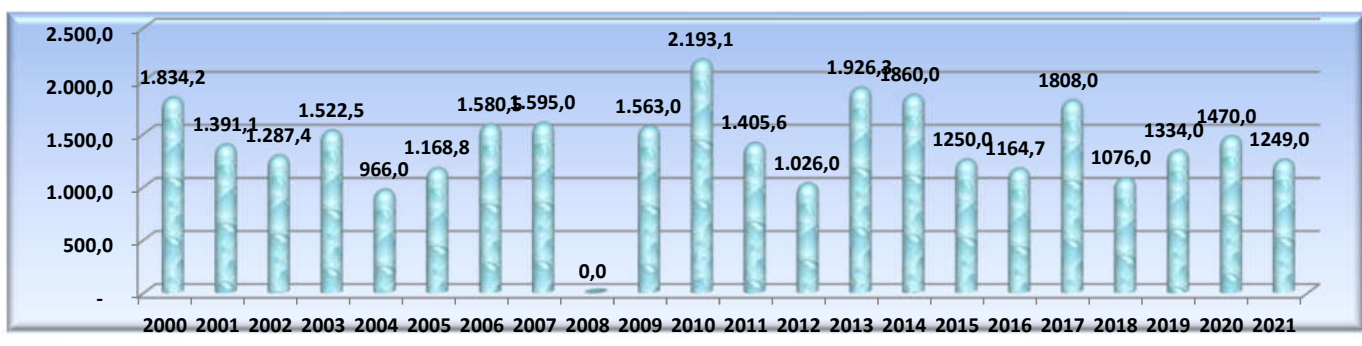
Elaboração e cálculos: EMDAGRO/ASPLAN

(...) Informações não disponíveis

Município de Arauá
Gráfico 01 - Pluviosidade Média Mensal - 2000 a 2021



Município de Arauá
Gráfico 02 - Pluviosidade Média Acumulada Anual - 2000 a 2021



Município de Arauá
Gráfico 03 - Pluviosidade Acumulada Anual e Média do Período - 2000 a 2021

